

BAY / BOW WINDOW INSTALLATION INSTRUCTIONS

STEP #1
MEASURE ROUGH OPENING AND COMPARE TO UNIT DIMENSION OF THE BAY WINDOW.

STEP #2
SHIM SILL OF THE OPENING PRIOR TO SETTING WINDOW INTO PLACE.
IF ROUGH OPENING SILL IS LEVEL WINDOW CAN BE SET WITHOUT SHIMMING.

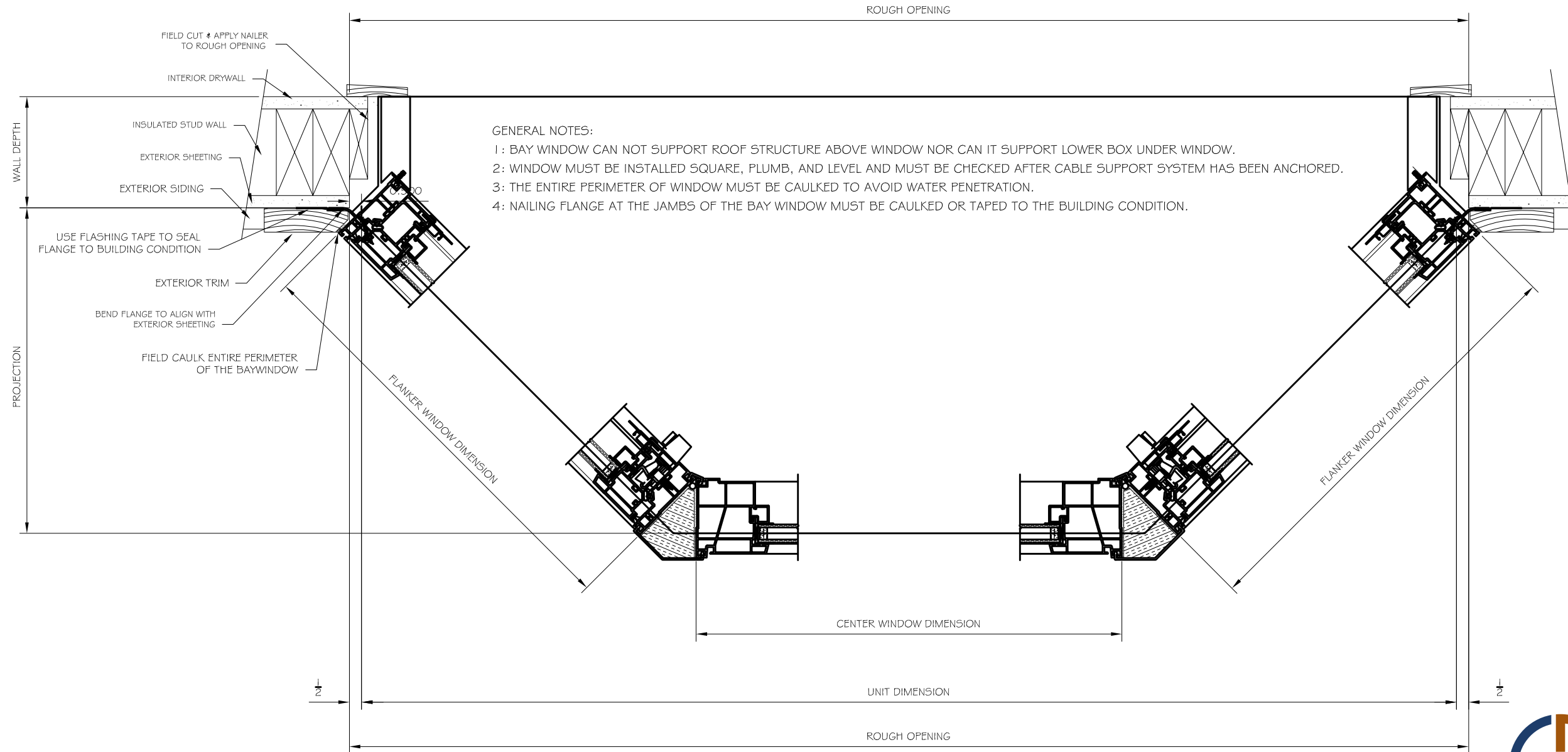
STEP #3
ANCHOR CABLE SUPPORT BRACKET ONTO THE BUILDING CONDITION.

STEP #4
SLIDE BAY WINDOW INTO OPENING

STEP #5
SECURE THE INTERIOR OF HEAD AND SILL PLATE.

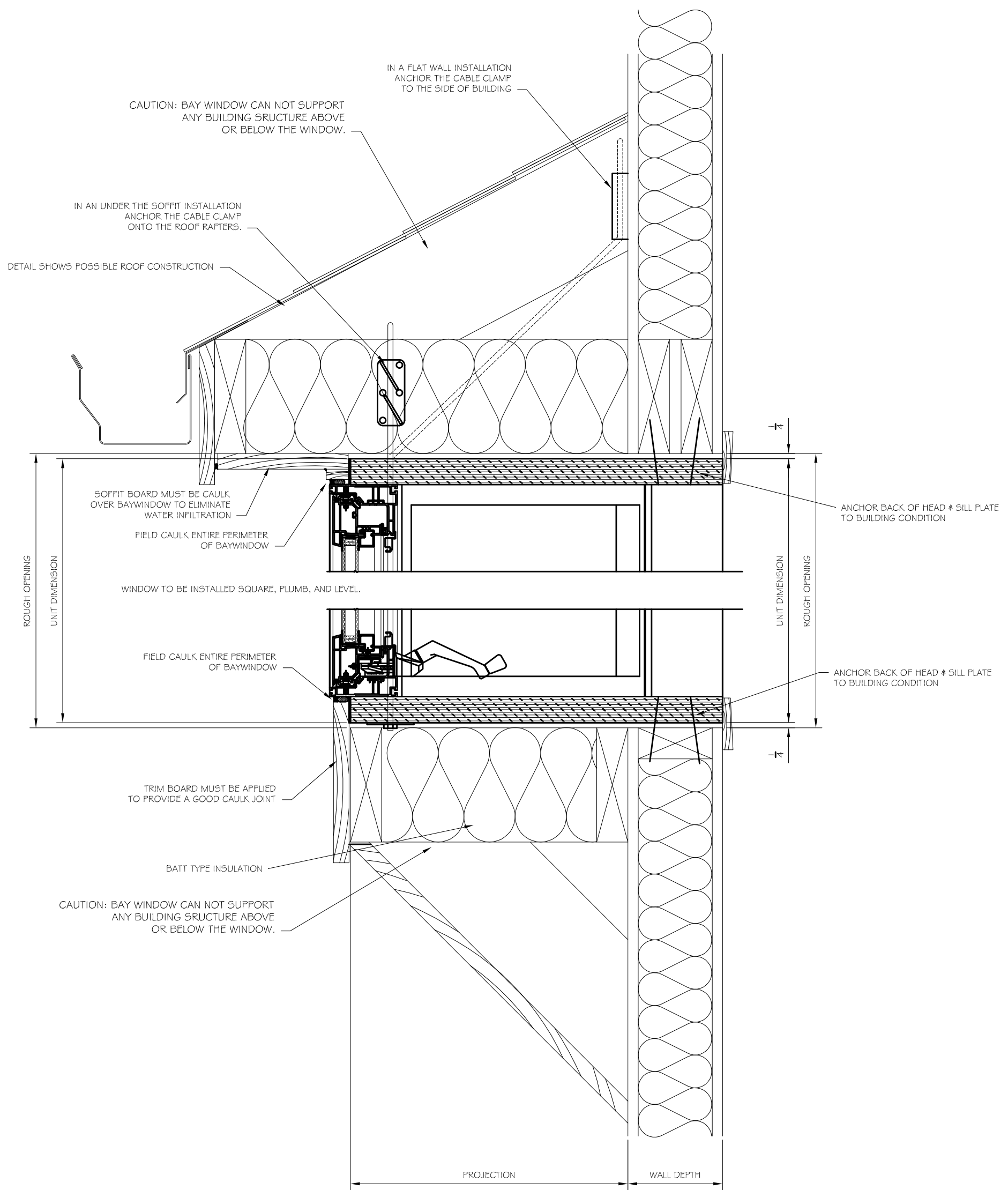
STEP #6
THREAD CABLE THROUGH SUPPORT BRACKET. CHECK THE PLUMB, SQUARE, AND LEVEL OF BAY WINDOW BEFORE TIGHTENING THE CABLE SUPPORT BRACKET.
DOUBLE CHECK THE SQUARE, LEVEL, AND PLUMB OF THE BAY WINDOW AFTER PUTTING THE WEIGHT OF THE BAY WINDOW ON THE CABLE

STEP #7
CAULK MUST BE USED AROUND THE COMPLETE PERIMETER OF WINDOW.
USE THE PROPER FLASHING REQUIRED FOR YOUR EXACT CONDITION.
WATER PENETRATION BETWEEN BUILDING CONDITION AND BAY WINDOW WILL VOID WARRANTY.



MAIL: P.O. Box 3203 Sioux City, Iowa 51102
 PHONE: (402) 494-6000
 FAX: (402) 494-6765
 WEBSITE: www.gerkin.com
 E-MAIL: gerkin@gerkin.com

BAY / BOW WINDOW INSTALLATION INSTRUCTIONS



MAIL: P.O. Box 3203 Sioux City, Iowa 51102
 PHONE: (402) 494-6000
 FAX: (402) 494-6765
 WEBSITE: www.gerkin.com
 E-MAIL: gerkin@gerkin.com