



GERKIN™
WINDOWS & DOORS

Shooting The Breeze



VOLUME:
07

ISSUE:
04

FALL:
19

In This Issue:



Most Efficient

Page 1



Folding Hardware

Page 2



Air Leakage

Page 3

Midnight/Midnight



We are pleased to announce the addition of the Midnight color option for the interior of many of our Comfort Series Windows and Doors. With this new color option, customers may choose Midnight/ Midnight or Midnight / White color options.

The Midnight interior color is made of the same EXOFOL material used for our Midnight exterior color. Choosing a dark color that won't fade over time was not an easy task. Many vinyl window companies use paint or PVC laminate films that easily fade, chalk, crack and scratch! Gerkin's EXOFOL has proven to be a superior choice over those options.

EXOFOL is an acrylic based printed film. The adhesive used on this wrap forms a solid bond when exposed to air and becomes one with the vinyl. This eliminates any possibility of

peeling, and it cannot be removed once it is set. The acrylic reduces heat by using "solar shield technology" (SST) which reflects the sun's rays and lowers the heat buildup. EXOFOL has multi layers that also block the UV rays and resist weathering.

Midnight/Midnight is moisture resistant, is unaffected by environmental pollutants, and is virtually self-cleaning with rain!

The Comfort Series Products that are available in Midnight/Midnight are casements, awnings, sliding patio doors and matching fixed windows, side lites and transoms.

We are ready to take orders on these products. For more information, contact your Gerkin representative.

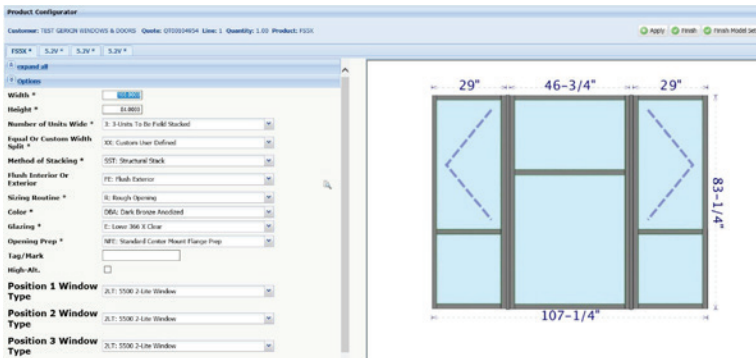
RECOGNIZED BY ENERGY STAR

Comfort Series Achieves Energy Star Most Efficient Designation

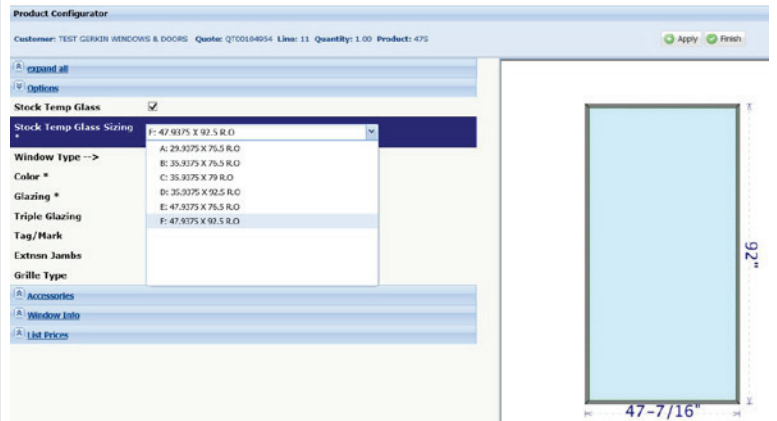


Gerkin Comfort Series casement and awning windows (model 4300) and our model 4700 fixed window have been recognized by Energy Star as meeting their Most Efficient designation. Windows earning this achievement must have u-values at or below .20 and a solar heat gain at .20 or greater for the northern zone. To take advantage of this great performance, ask Gerkin for details on their triple glazed options. When you are looking for style, beauty and efficiency, look no further than Gerkin Windows and Doors!

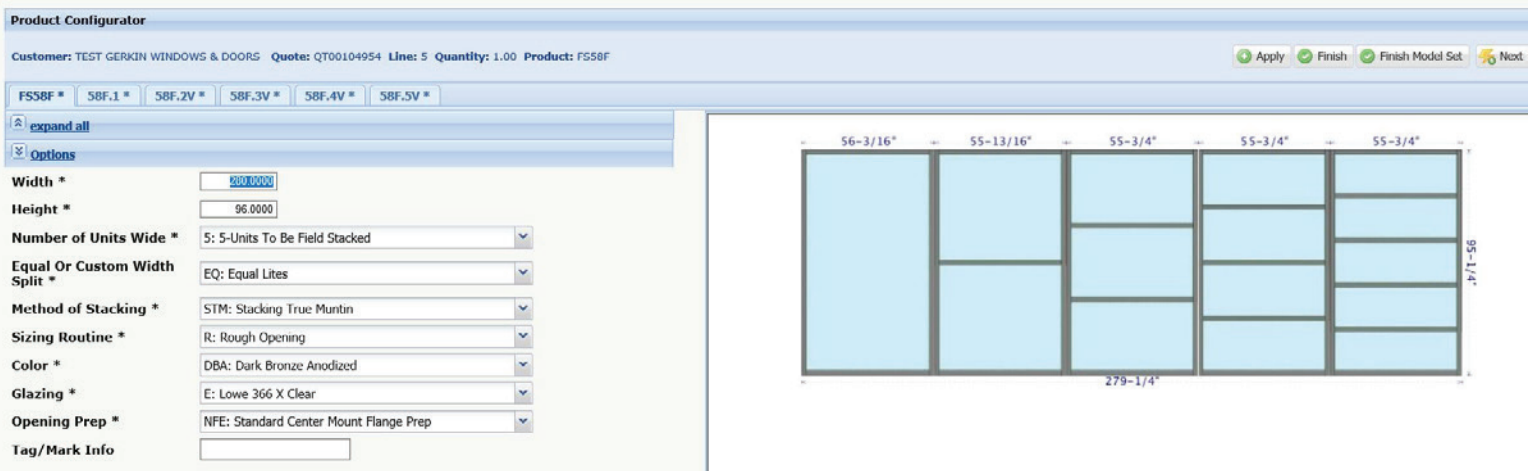
GERKIN QUOTES - NEW FEATURES



The Gerkin quoting system offers several new options. Dealers can now quote windows using a new construction or **replacement window tab**. When selecting the replacement window tab, the quoting system will take off the nailing flange, add the pre-drill option and include the sill expander. Sliders and single hungs will have the frame extender included for a 3 1/4" frame. Our Midnight sill expander is now available and can be quoted.



An added feature that many dealers are taking advantage of is a **stock patio door tempered glass option** that can be used in fixed vinyl and aluminum windows. This option shows sizes available with stock tempered glass pricing, which is a great savings over custom tempered glass.



GerkinQuotes now has the capability of showing an **opening with multiple aluminum windows FS5X** as well as 58F windows.

NEW PRODUCT

Aluminum Folding Hardware

Gerkin's Rhino casement window now features a new folding and nesting hardware to allow for a more sleek and contemporary look. Not only does it look great, but it also offers excellent torque for easy opening and closing of your windows. The new folding/nesting crank hardware is now a standard on all casement colors of dark bronze anodized, clear anodized, painted bronze and white. Satin nickel is also offered as an option.



PROJECT PROFILE

Kuhlmann Residence

Architect / Builder – Extraordinary Homes

Location – Overland Park, KS

Pictured - Rhino 58F Fixed, 5300 Casement and 5400 Patio Door



BLOWER DOOR/AIR INFILTRATION

IECC Air Leakage



It is getting more common for states and local authorities to require a blower door test to be performed on new houses. A blower door is a powerful fan that mounts into the frame of an exterior door and is used as a diagnostic tool to measure how much air filters out of the house (The home's "airtightness"). The fan pulls air out of the house, lowering the air pressure inside. The higher outside air pressure then flows in through all unsealed cracks and openings.

The current 2012 IECC code calls for an air leakage of less than 3 air exchanges per hour with a 20 mile per hour wind load. (Climate zones 3-8)

Recently Gerkin officials were invited by Nebraska Public Power to witness a house being tested with Gerkin casement windows.

The house tested so well that the equipment had trouble detecting air infiltration. The power company official conducting the test told us that he has never had a house test so tight. The end result was that there were only .17 air exchanges per hour verses the maximum allowed by code at 3 air exchanges per hour. That is over 1700% better than required! Smoke tests were also performed on the windows and doors. This test showed no air movement around the windows and doors.

The impressive test results of this blower door test is another example of Gerkin's performance success due to the relentless focus on overall window performance.

OUR COMMITMENT

Quality since 1932

Our mission is to manufacture high quality window and door products that are value priced, thermally efficient and low maintenance. Throughout our history we have established ourselves as an innovator in the design and manufacturing capability of insulated windows and doors. Stringent product testing and innovative design has allowed our products to evolve as market and consumer needs change, bringing you the quality, maintenance-free products you desire. We publish our AAMA test results to back up our claims of product performance and quality.



P.O. BOX 3203 SIOUX CITY, IA 51102
PHONE: 402.494.6000 FAX: 402.494.6765 TOLL FREE: 800.475.5061

gerkin.com