



6100

VINYL SINGLE HUNG WINDOW



800.475.5061 | gerkin.com

# 6100

## VINYL SINGLE HUNG WINDOW

### DECADES OF PROVEN PERFORMANCE

The Comfort Series model 6100 single hung is a new generation window for Gerkin! After decades of proven performance with our single hung, we found a way to make it even better! Here at Gerkin, we only make changes in our products to ensure better performance. Many competitors are working hard at seeing how cheap they can build a single hung. We believe our customers want a quality product and the best value. That's why we build our windows to perform among the best in the industry. The 6500 window compliments the 6100 single hung as a stand alone fixed window or can be used to mull fixed and specialty shapes in order to create custom configurations.



# 6100

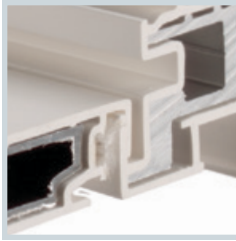
## VINYL SINGLE HUNG WINDOW

### 6100 SERIES | FEATURES

The 6100 is highlighted by a stylish 2 1/2" beveled frame design, fusion welded sash and frame with triple weather seals. We have designed this window to perform at a very high level through the use of multiple vinyl chambers, internal aluminum reinforcements, heavy-duty block and tackle balances as well as warm edge technology glass! If you're looking for a high performance single hung window with easy operation and low maintenance all at a great value, look no further than the Comfort Series 6100!

**Multiple Seal Weatherstripping:**

Triple fin-seal weatherstripping on the jambs with additional weatherstripping at the interlock provides a tight air and water seal at the sash.

**Interlock:**

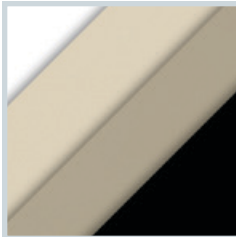
The 6100 has a full interlock with fin seal weatherstripping at the meeting rail. Its design provides a positive seal and easy operating engagement.

**Balance / Tilt Latches:**

6100 operates on a smooth operating block and tackle balance system. The tilt latches are recessed into the sash for a more attractive appearance.

**Aluminum Reinforced Sash:**

The sash is reinforced with extruded aluminum stiffeners in the full perimeter of the sash. The sash is also glazed on the exterior for a more attractive appearance on the interior.

**Color Options:**

White  
Tan  
Sandstone  
Midnight

**Sloped Sill Design:**

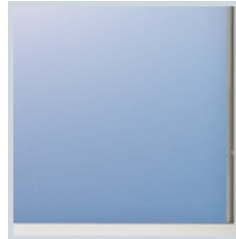
Our single hung utilizes a fully sloped, weepless sill design. This provides for excellent drainage and air infiltration performance. Plus, there are no weeps to get plugged!

**Extruded Screen:**

Gerkin offers more strength in its screen frame in order to achieve greater screen durability. The screen is removable without removing the sash.

**Frame:**

2 1/2" frame depth and a slimline design with exterior bevels provide strength and beauty. Our frame and sash are fully fusion welded extruded UPVC.

**LoE<sup>3</sup> Glass:**

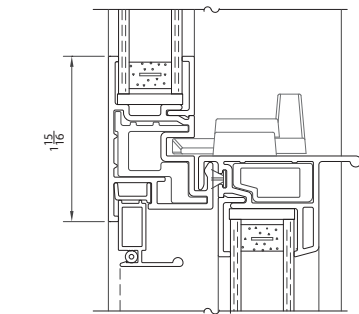
The 6100 single hung comes with 3/4" insulated clear or argon filled LoE<sup>3</sup> high performance glass. Double LoE or laminate glass options are also available.

# 6100

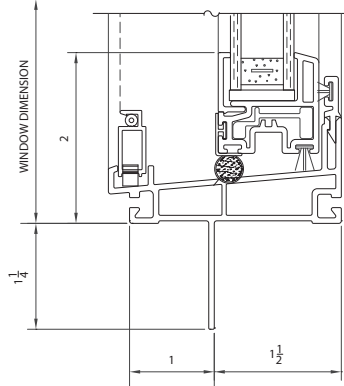
## VINYL SINGLE HUNG WINDOW

### 6100 SERIES | DETAILS

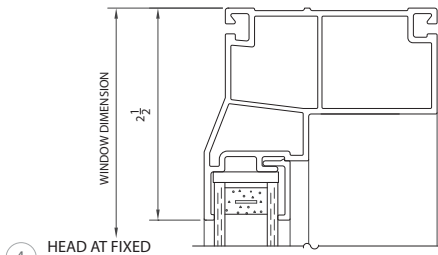
CON 10061



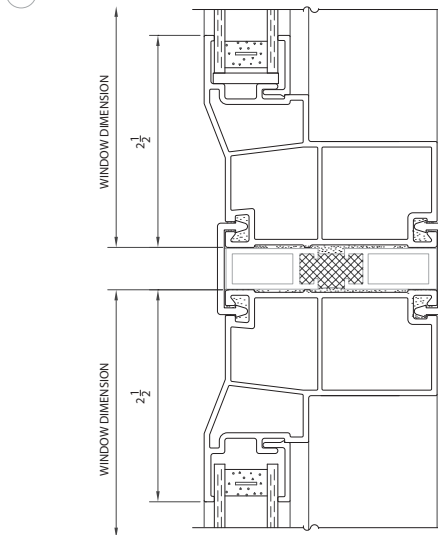
1 TYP. SILL AT SASH



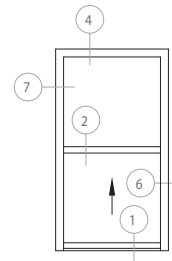
2 MEETING RAIL



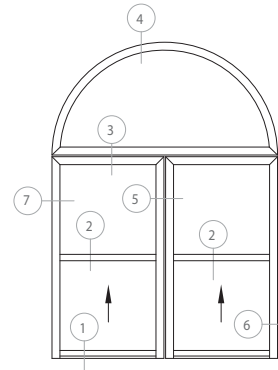
4 HEAD AT FIXED



3 TYP. MULLION



TYPICAL SINGLE HUNG



TYPICAL 2-LITE SINGLE HUNG W/ ROUND TOP

SHEET NO: 1

6100 SERIES SINGLE HUNG WINDOW

ORNLTD 2015 CDA

GERKIN WINDOWS & DOORS RESERVES THE RIGHT TO CHANGE OR DISCONTINUE MANUFACTURING ANY OF ITS STANDARD WINDOW SYSTEMS OR COMPONENTS WITHOUT PRIOR WRITTEN NOTICE.



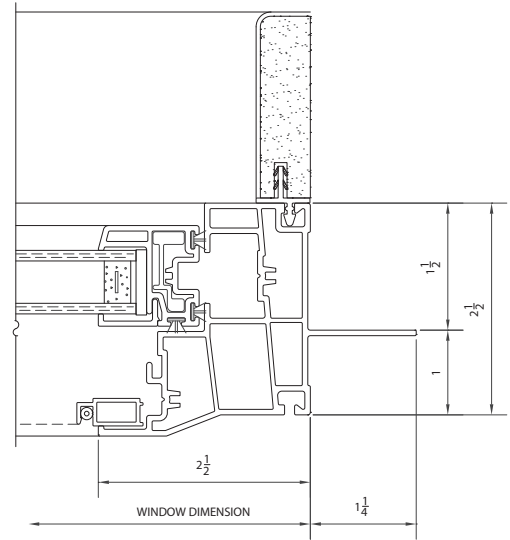
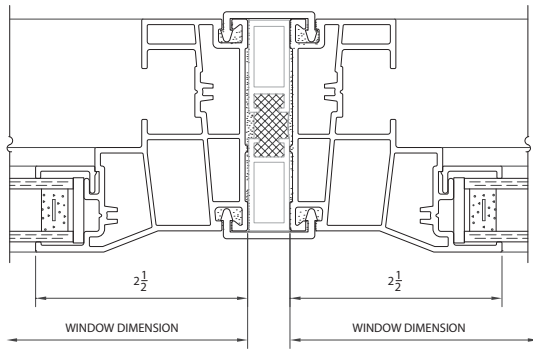
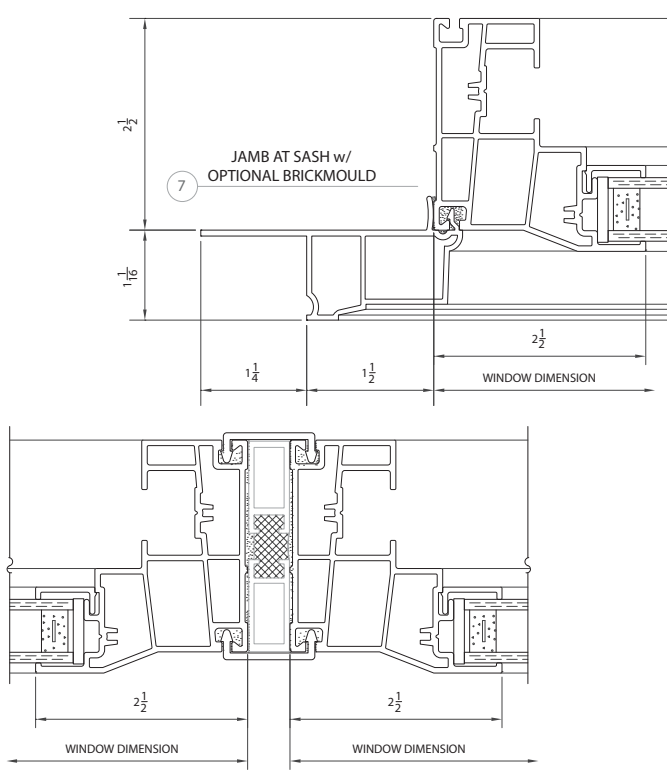
# 6100

## VINYL SINGLE HUNG WINDOW

6100 SERIES | DETAILS

SHEET NO:  
**2**

6100 SERIES SINGLE HUNG WINDOW



5 TYPICAL MULLION

6 JAMB AT SASH  
W/ EXTENSION JAMB

02/18/02

02/18/02

# 6100

## VINYL SINGLE HUNG WINDOW

### TESTING

We go to great extremes to make sure our Comfort Series Vinyl window and door products are the best they can be. Our products are tested by independent laboratories to ensure quality and performance. Our windows and doors are rated and certified by the American Architectural Manufacturers Association (AAMA) and the National Fenestration Rating Council (NFRC). Our Gerkin vinyl windows also carry the Energy Star label from the Environmental Protection Agency and the U.S. Department of Energy.

For more information about Comfort Series® vinyl windows and doors visit [gerkin.com](http://gerkin.com).



### 6100 SERIES | TEST RESULTS

NFRC   TEST RESULTS	
U-Value	.30 cfm/sq.ft.
U-Value / Air Only*	.34
Solar Heat Gain Coefficient	.22
Visible Light Transmittance	.51
Condensation Resistance	58

\*U-Values for our windows with 1/8" 366 LoE3 glass, air only, 1/8" clear glass, no muntins or argon in the air space.

"Thermal Value w/ 1/8" 366/Argon/ 1/8" Clear - No Muntins

AAMA   TEST RESULTS	
<b>Test Window   2 Equal Lite 48" X 60"</b>	
Air Infiltration	.05 cfm/sq.ft.
Water	6.0 psf
Structural	60 psf
Indoor/Outdoor Sound Transmission Class	28
Sound Transmission Class (w/ 1/4 LAM X 1/8 A)	33
AAMA Rating	LC-PG40-H

AAMA   TEST RESULTS	
<b>Test Window   2 Equal Lite 44" X 77"</b>	
Air Infiltration	.06 cfm/sq.ft.
Water	6.0 psf
Structural	60 psf
Indoor/Outdoor Sound Transmission Class	28
Sound Transmission Class (w/ 1/4 LAM X 1/8 A)	33
AAMA Rating	LC-PG40-H

Tested and Certified to AAMA/WDMA/CSA 101/I.S.2/A440-05 & A440-08 U-Value/SHGC/VT/CRF Tested to NFRC 100/200/500



800.475.5061 | [gerkin.com](http://gerkin.com)