



5045

ALUMINUM HORIZONTAL SLIDER WINDOW



800.475.5061 | gerkin.com

5045

ALUMINUM HORIZONTAL SLIDER WINDOW

DECADES OF PROVEN PERFORMANCE

Gerkin has long been known for making one of the tightest horizontal sliders on the market. While many competitors hide their air infiltration rates, Gerkin touts a rate that is over 400% better than architectural standards. These sliders feature dual interlocks, dual weather strips and tapered sash rails, which allow for uncommonly low air infiltration rates. Our NFRC thermal numbers also boast one of the best found in aluminum windows. The Rhino slider offers a great overall value in cost and performance.

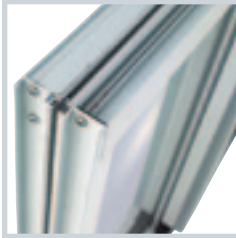
Our fixed and slider windows are so well made, they have been used in "LEED" projects and NetZero buildings.



5045

ALUMINUM HORIZONTAL SLIDER WINDOW

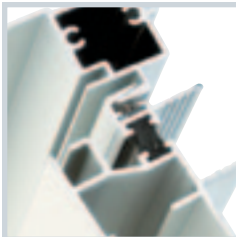
5045 HORIZONTAL SLIDER | DETAILS

**Thermal Breaks:**

2-3/8" thermally broken frame depth: Gerkin offers thermal breaks in the frame and sash for improved thermal efficiency.

**Nail Fins:**

Nail fins are a standard feature for this window. The corners are closed which allows for full perimeter flashing. As an option, Gerkin will remove the nail fin for masonry and subframe installations.

**Interlocks:**

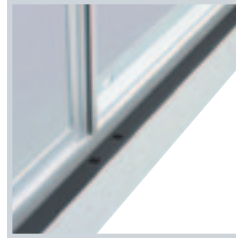
The use of jamb and mullion interlocks helps to reduce deflection and creates a snug fit due to reduced movement away from the weather seals. The structure of the window is enhanced and air infiltration is reduced.

**Dual Weatherstripping:**

This window features heavy wool pile weatherstripping with a Mylar fin on both sides of the sash. This means that whether there are negative or positive pressures on the window, there will never be a disconnection of weatherstrip, thus giving Gerkin one of the tightest sliders on the market.

**Rollers:**

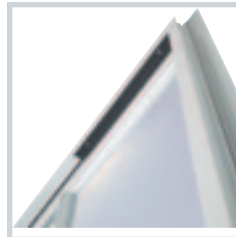
These rollers are designed to last for years with trouble free operation. Our sliders are among one of the easiest windows to operate with a maximum operating force of 18 pounds on the largest window we make. The rollers also offer a secondary height adjustment to help with sightline adjustments after installation.

**Sill Track:**

With the deeper sill track on this slider, Gerkin has incorporated a secondary sill, which the sash rolls on. This PVC product is quiet, doesn't scratch and has a weep system that removes water from the operating area of the sash.

**Deadbolt Lock:**

Our Self-latching deadbolt lock is a level 10 forced entry rated deadbolt and offers automatic locking when the window is closed. This is a great security feature.

**Anti-lift Stop:**

Gerkin installs a security feature that won't allow the sash to be removed while the deadbolt is in the locked position. The window must be fully open prior to being able to remove the sash.

**Weeps With Baffles:**

Gerkin includes an open cell foam inside each weep hole, which restricts snow, dirt, insects and other debris from entering the window through the weeps.

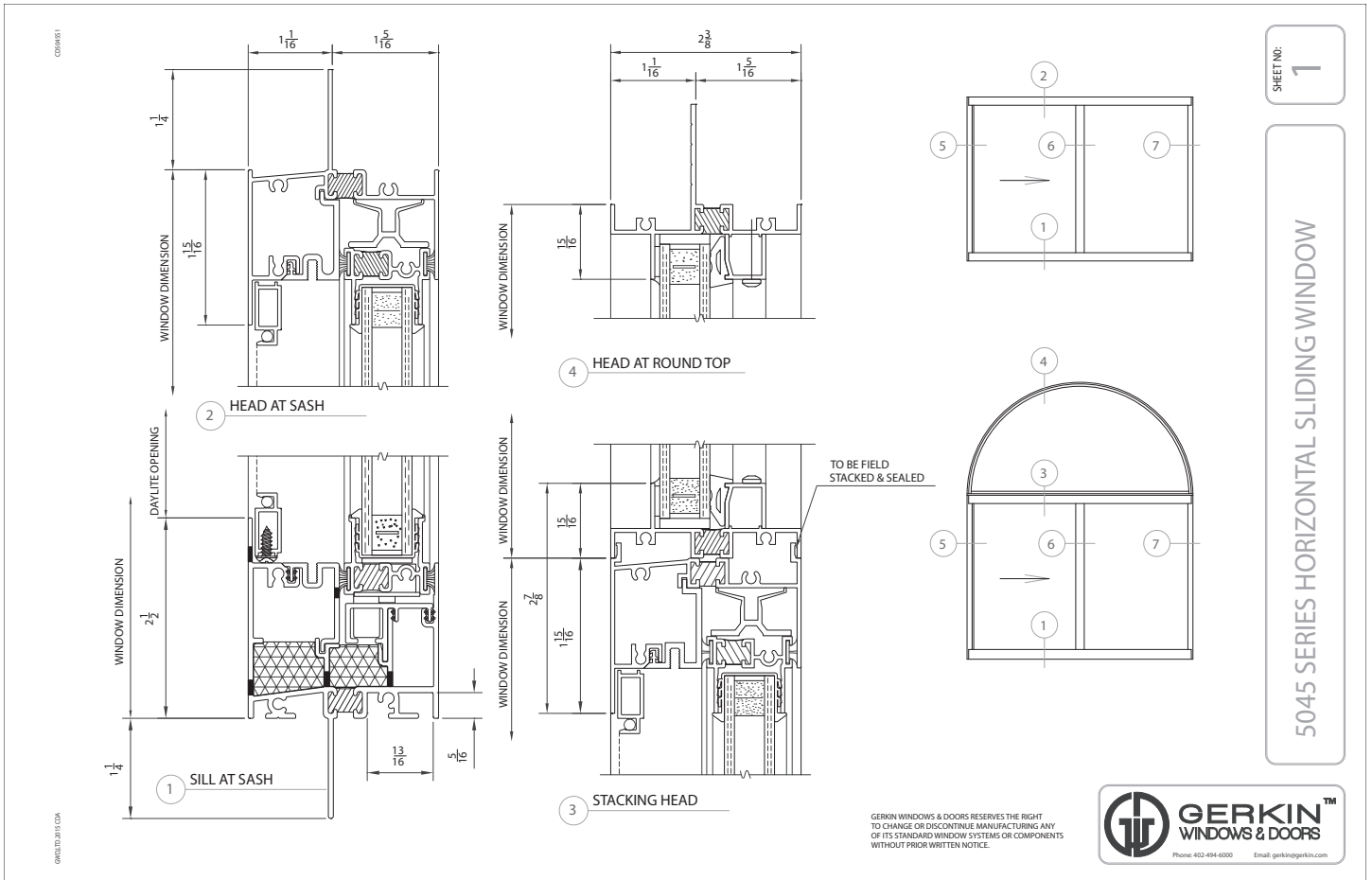
**Extruded Screen Frames:**

The strength of extruded screen frames is a major maintenance cost advantage for Gerkin over easily damaged roll form screens.

5045

ALUMINUM HORIZONTAL SLIDER WINDOW

5045 HORIZONTAL SLIDER | DETAILS



5045

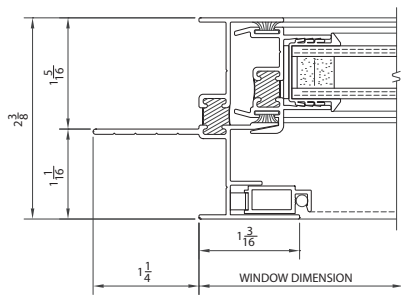
ALUMINUM HORIZONTAL SLIDER WINDOW

5045 HORIZONTAL SLIDER | DETAILS

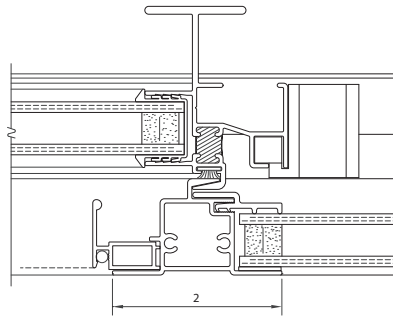
SHEET NO:

2

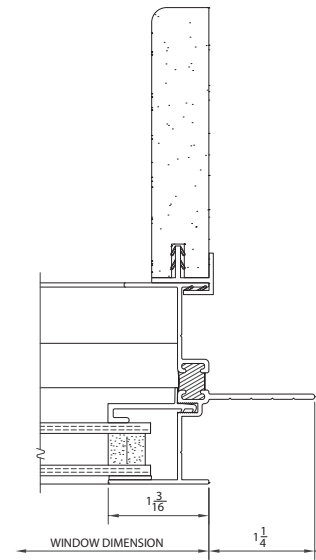
5045 SERIES HORIZONTAL SLIDING WINDOW



5 OPERATOR JAMB



6 MEETING RAIL



7 FIXED JAMB w/
EXTENSION JAMB



02/04/20

02/04/20

5045

ALUMINUM HORIZONTAL SLIDER WINDOW



5045 HORIZONTAL SLIDER | TEST RESULTS

NFRC TEST RESULTS	
U-Value w/LoÉ3/Argon	.37
Solar Heat Gain Coefficient ²	.24
Visible Transmittance ³	.54
Condensation Resistance	45
U-Value Air Only*	.42

AAMA TEST RESULTS	
Test Window 120" x 64"	
Class	LC-PG45-HS
Air Infiltration	.04 cfm/sq.ft.
Water	6.90 psf
Structural Wind Load ¹	67.5 psf
Indoor/Outdoor Sound Transmission Class	28 w/ 1/4 LAM X 1/8 A
Sound Transmission Class	31 w/ 1/4 LAM X 1/8 A
AAMA Rating	A440-08



Color Options:

- White
- Bronze
- Clear Anodized
- Dark Bronze Anodized

AAMA TEST RESULTS	
Test Window 108" x 60" (X0X)	
Class	LC-PG50
Air Infiltration	.06 cfm/sq.ft.
Water	7.50 psf
Structural Wind Load	75.0 psf
Indoor/Outdoor Sound Transmission Class	28
Sound Transmission Class (w/ 1/4 LAM X 1/8 A)	31
AAMA Rating	A440-08

*U-Values for our windows with 1/8" 366 LoÉ3 glass, air only, 1/8" clear glass, no muntins or argon in the air space.

Tested and Certified to AAMA/WDMA/CSA 101/I.S.2 A440-08

U-Value/SHGC/VT/CRF Tested to NFRC 100/200/500

Thermal Values are 5/8" IGU w/ 1/8" 366/Argon/ 1/8" Clear - No Muntins



800.475.5061 | gerkin.com