



5300

ALUMINUM CASEMENT WINDOW



800.475.5061 | gerkin.com

5300

ALUMINUM CASEMENT WINDOW

DECADES OF PROVEN PERFORMANCE

The Gerkin 5300 casement windows are designed with performance in mind. The air infiltration on our casement is often better than our competitor's fixed windows. These windows perform so well in NFRC thermal tests, that they have been used in 5-Star Green Build projects, Net Zero housing and in numerous LEED certified projects. Some of the highlighted features of the casement includes compression bulb weather seals, multi-point locking, easy to crank roto system, heavy-duty stainless steel hinges and hydraulically locked sash corner keys with liquid welds.

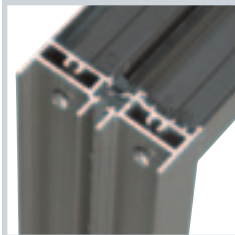
Our attention to detail in design and workmanship has earned Gerkin a reputation for building quality windows, which stand the test of time and have earned Gerkin the Builders Choice Award.



5300

ALUMINUM CASEMENT WINDOW

5300 CASEMENT | DETAILS

**2 3/8" Thermally Broken Frame Depth:**

We use double wall construction and a thermally broken frame and sash for improved thermal efficiency.

**Sash Corners:**

Gerkin uses reinforced power crimped sash corners. All sash corners are fortified with two engineered corner keys which are hydraulically crimped, creating a corner built to last for years of trouble free operation.

**Sash Overlaps Frame:**

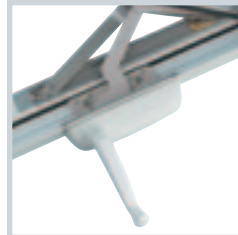
We provide two compression seals on every sash and overlap the frame of the window with one of the seals. This design allows us to have one of the tightest windows available.

**Color Options:**

- White
- Bronze
- Clear Anodized
- Dark Bronze Anodized

**4-bar Friction Hinge:**

These heavy-duty hinges will provide easy operation and tension adjustments. Washable and egress hinges are available for roto operation or push/pull manual operation.

**Truth Maxim Roto Operators:**

We have eliminated the complaints of hard operating casements by offering extra cranking power and a low gear for smooth, trouble-free operation. Our gears have a close tolerance, which removes extra play in an open sash and reduces the likelihood of damage.

**Multi-Point Progressive Lock:**

This 3-point lock system is very forgiving with a wide operating tolerance. The use of secondary locks is no longer needed. The weather seal received from the system is incredibly tight.

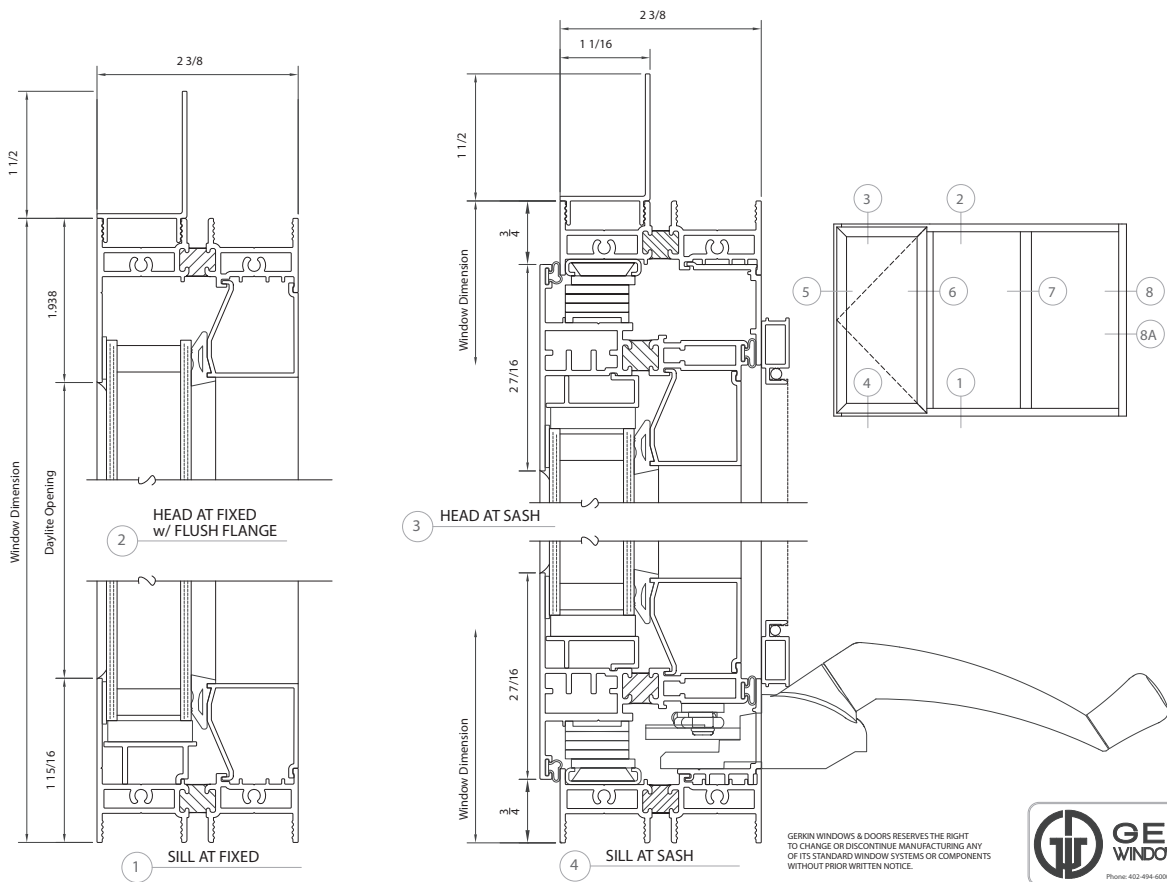
5300

ALUMINUM CASEMENT WINDOW

5300 CASEMENT | DETAILS

03/20/21

03/20/21



SHEET NO: 1

5300 SERIES PROJECT-OUT CASEMENT WINDOW

GERKIN WINDOWS & DOORS RESERVES THE RIGHT TO CHANGE OR DISCONTINUE MANUFACTURING ANY OF ITS STANDARD WINDOW SYSTEMS OR COMPONENTS WITHOUT PRIOR WRITTEN NOTICE.



5300

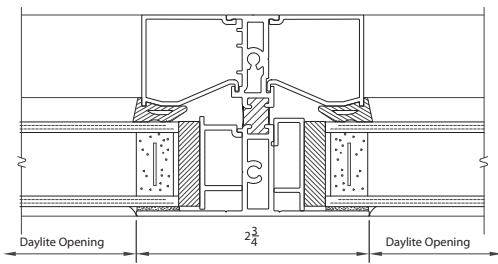
ALUMINUM CASEMENT WINDOW

5300 CASEMENT | DETAILS

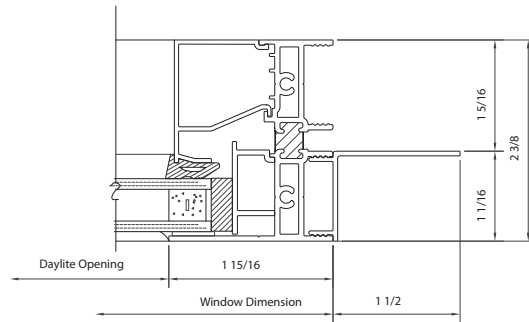
SHEET NO:

2

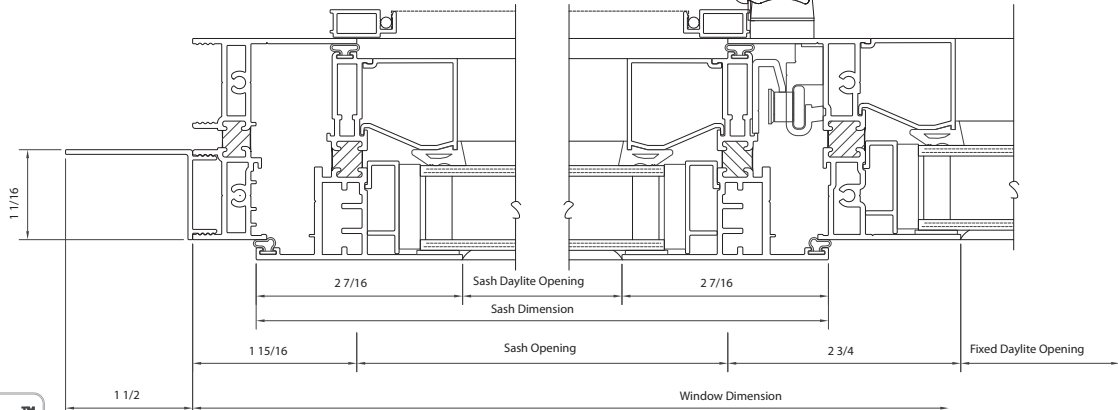
5300 SERIES PROJECT-OUT CASEMENT WINDOW



7 TRUE MUNTIN



8 JAMB @ FIXED



5 JAMB AT SASH W/
OPTIONAL NAILING FLANGE

6 MEETING RAIL



5300

ALUMINUM CASEMENT WINDOW



5300 CASEMENT | TEST RESULTS

NFRC TEST RESULTS	
U-Value w/LoÉ³/Argon	.48
Solar Heat Gain Coefficient	.20
Visible Transmittance	.42
Condensation Resistance	39
U-Value Air Only*	.51

AAMA TEST RESULTS	
Test Window 105" x 72"	
Class	CW-PG40-C
Air Infiltration	.01 cfm/sq.ft.
Water	9.00 psf
Structural Wind Load	60.0 psf
U-Value w/LoÉ³/Argon	.49
Solar Heat Gain Coefficient	.20
Visible Transmittance	.42
Condensation Resistance	38
Indoor/Outdoor Sound Transmission Class	28
Sound Transmission Class (w/ 1/4 LAM X 1/8 A)	36
U-Value Air Only*	.51

5300 CASEMENT | TEST RESULTS

AAMA TEST RESULTS	
Test Window 93" x 60"	
Class	CW-PG60-C
Air Infiltration	.01 cfm/sq.ft.
Water	9.0 psf
Structural Wind Load	90.0 psf
Indoor/Outdoor Sound Transmission Class	28
Sound Transmission Class (w/ 1/4 LAM X 1/8 A)	36

AAMA TEST RESULTS	
Test Window 69" x 48"	
Class	CW-PG90-C
Air Infiltration	.01 cfm/sq.ft.
Water	12.00 psf
Structural Wind Load	135.0 psf
Indoor/Outdoor Sound Transmission Class	28
Sound Transmission Class (w/ 1/4 LAM X 1/8 A)	36

*U-Values for our windows with 1/8" 366 LoÉ³ glass, air only, 1/8" clear glass, no muntins or argon in the air space.

Tested and Certified to AAMA/WDMA/CSA 101/1.S.2 A440-08
 *U Values and CRF Values, tested with 1" insulating glass w/LoÉ³
 U-Value/SHGC/VT/CRF Tested to NFRC 100/200/500



800.475.5061 | gerkin.com