

CA
CABRIO SERIES™



CABRIO

ALUMINUM STORM DOORS



 **GERKIN™**
WINDOWS & DOORS

800.475.5061 | gerkin.com

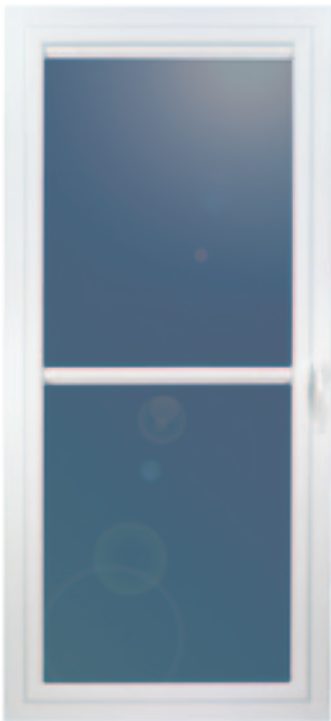
CABRIO

ALUMINUM STORM DOORS

DECADES OF PROVEN PERFORMANCE

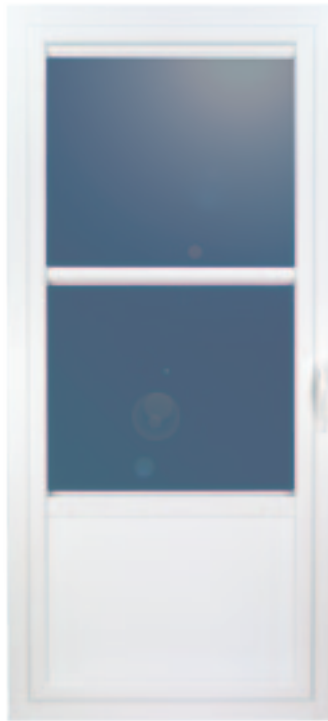
The Cabrio is our newest storm door product line featuring self-storing doors with retractable screens. These screens are hidden away in the head of the door when ventilation isn't needed, thus giving a beautiful, clear view. The operating sash glides up and down with ease due to a smooth sash balance system.

The Cabrio line touts three styles and colors to choose from with three hardware options and accessories. If you're looking for a quality built storm door, look no further than a Gerkin Storm Door!



Model 809

- Full-view
- Retractable screen
- Built in balances offer an easy-to-operate sash
- Heavy duty 1-3/4" extruded mainframe
- Heavy weatherstripping overlaps for a tight seal
- Stylish, ergonomically friendly handle options look and feel great
- Available in 32" and 36"
- Available in White, Sandstone and Almond
- Custom sizes available



Model 802

- Self-storing mid view
- Convenient self-storing ventilation; no glass to store
- Aluminum clad solid core kick panel withstands years of daily use
- Stylish, ergonomically friendly handle options look and feel great
- Heavy-duty, 3/4" extruded mainframe for long trouble-free life
- Available in White, Almond and Sandstone
- Available in 32" and 36"
- Custom sizes available



Model 801

- Self-storing high view
- Convenient self-storing ventilation; no glass to store
- Large glass area provides light and ventilation
- Aluminum clad solid core kick panel withstands years of daily use
- Stylish, ergonomically friendly handle options look and feel great
- Heavy-duty, 1-3/4" extruded mainframe for long trouble-free life
- Available in White, Almond and Sandstone
- Available in 32" and 36"
- Custom sizes available

CABRIO

ALUMINUM STORM DOORS

CABRIO SERIES | FEATURES

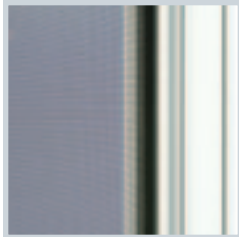
Gerkin Windows and Doors has been building storm doors for over 60 years. Our experience tells us that many companies try to build a door that fits a particular price point while forgetting about quality and value.

We will never compromise our product quality or value for a price point. Our doors are offered by independent dealers and distributors that appreciate unmatched quality and customer-friendly choices in door styles, hardware and accessories.

Gerkin offers three storm door categories: Classic, Uniquely Yours and Cabrio. All of our doors are guaranteed for as long as you own your home.

**Retractable Screen:**

Our screen retracts into the head of the door for clear viewing when ventilation isn't needed.

**Automatic Screen Reset Feature:**

The screen maintains a constant tight fit and will reset itself if needed by opening the sash.

**1 3/4" Mainframe:**

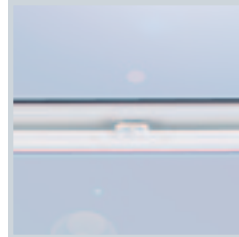
This heavy frame is designed for strength with beautiful rounded features that give elegance to every door.

**Heavy Extruded Aluminum Corner Gussets:**

Two engineered corner gussets per corner are used for superior strength to fight against twist or sag.

**Heavy Overlapping Weatherstrip:**

Cabrio doors overlap the z-bar with a heavy frame weatherstrip for a tight weatherproof seal.

**Sash Interlock:**

Our sashes interlock while in the closed position, which offers a weather-tight fit.

**Covered Screen Track:**

The edge of our screen is attractively hidden in a track. This track helps to hold the screen edge in place and gives a great looking interior appearance.

**Operating Sash Bug Guard:**

We have designed a barrier to restrict insects from coming around our sash. This barrier is effective in the open and closed positions.

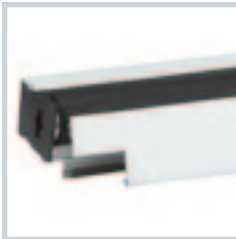
CABRIO

ALUMINUM STORM DOORS

CABRIO SERIES | FEATURES

**Installation Screw Covers:**

All exterior installation screws are hidden with our snap in screw covers.

**Easy Screen Cartridge Replacement:**

In the event that a screen is damaged, we made sure that screen cartridges could be replaced easily without dismantling any major door parts.

**Dual Seal Adjustable Sweep on Bottom Expander:**

Our expander has three adjustable positions and 2 sweeps to ensure a tight fit on nearly any doorsill.

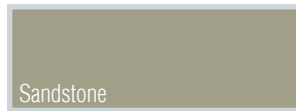
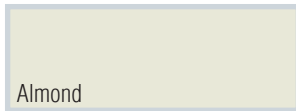
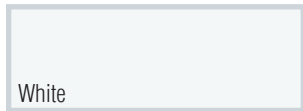
**Durable Kick Panels:**

Cabrio doors with low or high kick panels are built with the strongest abuse panel in the industry. Our kick panels consist of 2 aluminum alloy sheets each bonded on both sides to a 7/16" thick oriented strand board core.

CABRIO

ALUMINUM STORM DOORS

CABRIO SERIES | COLORS & HARDWARE



Available Colors:
White, Almond & Sandstone



Dakota:
Pewter, Brass & Oil Rubbed Finish.



Seville:
Pewter, Brass & Oil Rubbed Finish.



Dakota Painted:
Dakota Painted: White,
Almond & Sandstone.