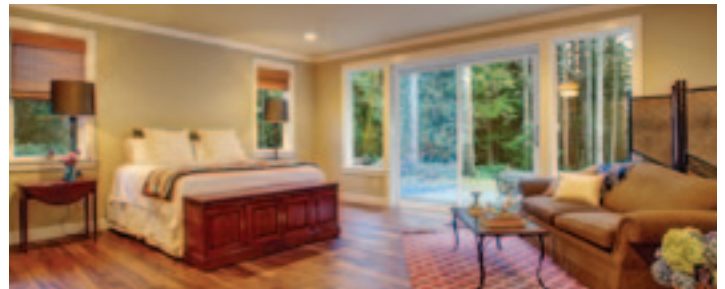




4400Wi

WOOD INTERIOR VINYL SLIDING GLASS DOOR



800.475.5061 | gerkin.com

4400Wi

WOOD INTERIOR VINYL SLIDING GLASS DOOR

DECADES OF PROVEN PERFORMANCE

Gerkin is one of the industry's most respected manufacturers of vinyl window and door products. We blend new material technology with innovative manufacturing processes allowing us to create thermally efficient, low maintenance window and door products that enhance the beauty of your home or building project.

We are continually looking at ways to improve our product lines through the addition of new product options and enhancements. The 4400Wi hybrid product offers the durability, efficiency and warmth of vinyl with the beauty of a real wood poplar veneer interior. This allows customers to stain or paint their windows in order to match interior trim and casing. Even the most selective customer will be impressed with the added touch of elegance the Comfort Series Wi offers.

Our door outshines all other sliding doors in weather tightness, ease of operation and long-term high performance. Fixed transoms and side lites are also available for the 4400Wi patio door.



4400Wi

WOOD INTERIOR VINYL SLIDING GLASS DOOR

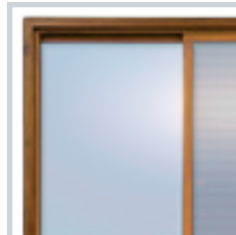
4400WI SERIES | FEATURES

The 4400Wi sliding glass door has even surprised those who are not easily impressed. We wanted a door that outshines all other sliding doors in weather tightness, ease of operation and long-term high performance. This door features unbelievable strength against the elements with multiple areas of heavy internal aluminum reinforcements and multi-chambered fusion welded vinyl. Fixed transoms and side lites are also available for the 4400Wi patio door.



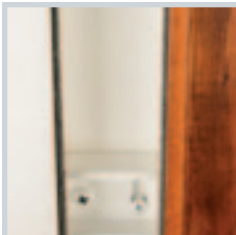
XO and OX design:

We utilize an XO or OX design with the non-operating lite glazed directly into the fully fusion welded extruded UPVC 4 5/8" frame. This enhances air infiltration performance and cuts installation time substantially.



Aluminum Stiffeners:

Our 4400Wi door houses a tubular aluminum-reinforced extrusion at the vertical meeting rail and vertical sash styles. We also have a galvanized stiffener in the mainframe head. This provides outstanding structural integrity and eliminates header sag, common in other vinyl doors.



Double Weatherstripping:

Twin fin-seal weatherstripping provides a tight seal at the operator panel.



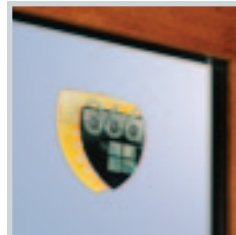
Full Interlock:

Our 4400Wi is fully interlocked at the vertical meeting rail and weatherstripped with fin-seal. Its flared interlock design provides for a solid fit at the meeting rail.



Aluminum Sill Cap:

Our UPVC sill is enhanced with a heavy duty extruded aluminum cap. This makes the entire area more durable for years of maintenance free use.



LoE³ Glass:

The 4400Wi Sliding glass door comes with 1" insulated clear or argon filled LoE³ high performance glass. Double LoE or laminate glass options are also available.



Hardware:

Heavy-duty color matched hardware is standard. Brass, pewter, oil rubbed bronze hardware, keyed cylinder locks and 2-point locks are available options. Our sash operates on adjustable heavy duty, stainless steel ball bearing rollers.



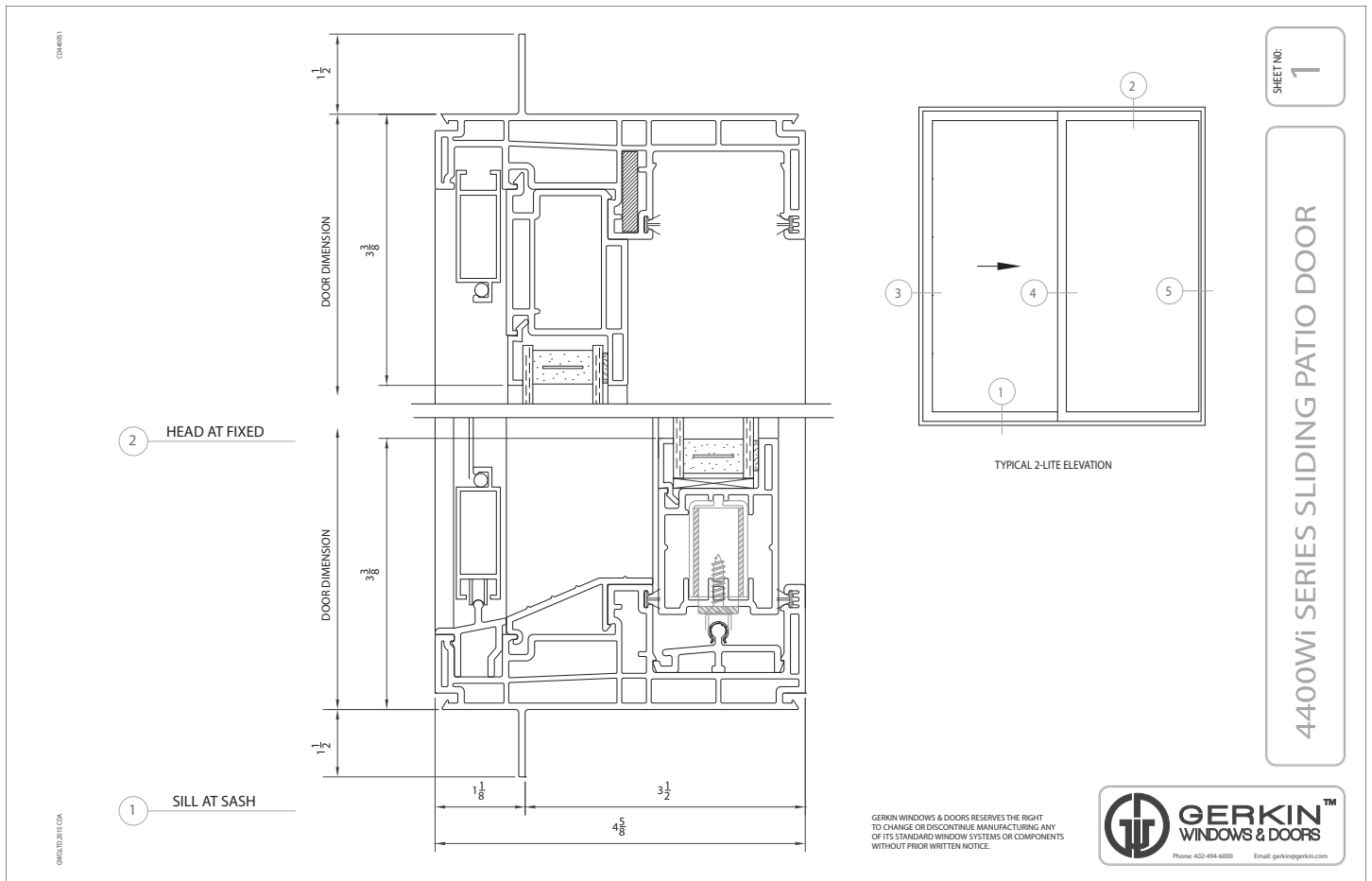
Color Options:

White
Sandstone

4400Wi

WOOD INTERIOR VINYL SLIDING GLASS DOOR

4400WI SLIDING GLASS DOOR | DETAILS



SHEET NO: 1

4400Wi SERIES SLIDING PATIO DOOR

4400Wi

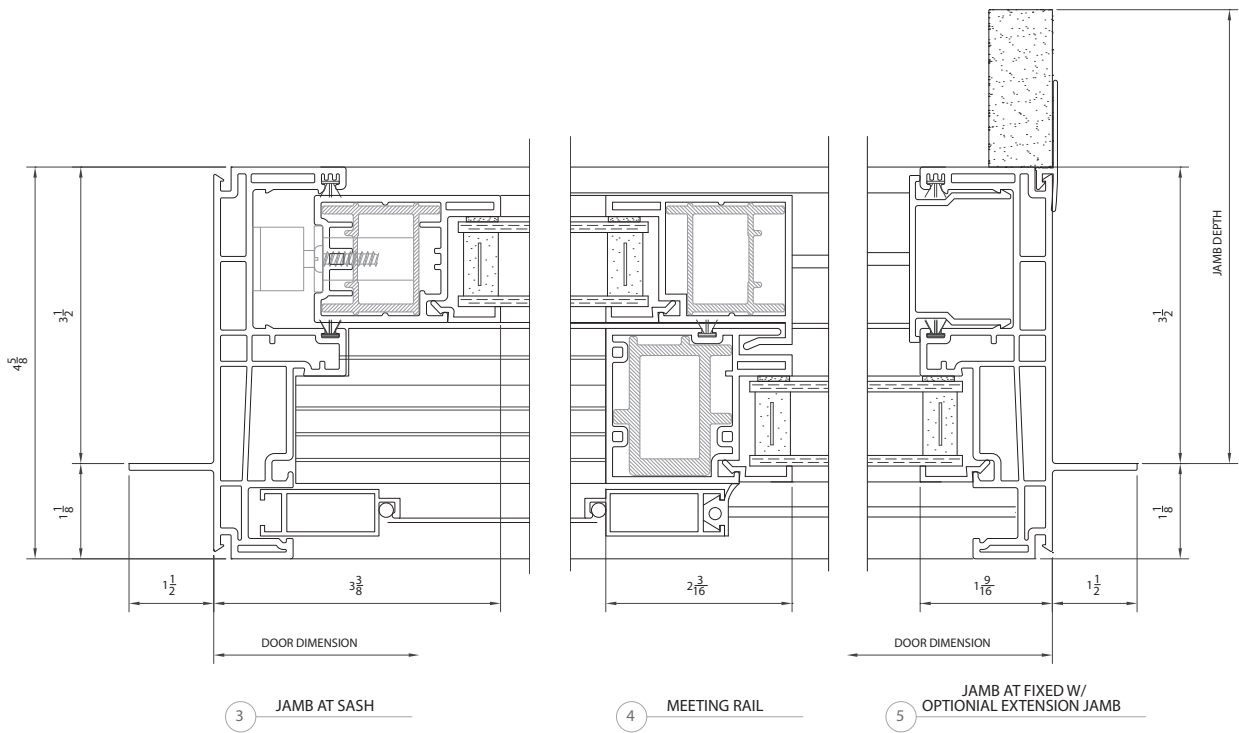
WOOD INTERIOR VINYL SLIDING GLASS DOOR

4400WI SLIDING GLASS DOOR | DETAILS

SHEET NO:

2

4400Wi SERIES SLIDING PATIO DOOR



4400Wi

WOOD INTERIOR VINYL SLIDING GLASS DOOR



4400Wi SLIDING GLASS DOOR | TEST RESULTS

NFRC | TEST RESULTS

U-Value	.29
U-Value / Air Only*	.33
Solar Heat Gain Coefficient	.23 psf
Visible Light Transmittance	.54 psf
Condensation Resistance	58

AAMA | TEST RESULTS

Test Door | 2 Equal Lite 95-1/2" X 95-1/2"

Air Infiltration	.05 cfm/sq.ft.
Water	4.5 psf
Structural	45 psf
Indoor/Outdoor Sound Transmission Class	28
Sound Transmission Class (w/ 1/4 LAM X 1/8 A)	34
AAMA Rating	LC-PG30-SD

*U-Values for our windows with 1/8" 366 LoE3 glass, air only, 1/8" clear glass, no muntins or argon in the air space.

Thermal Value w/ 1" OA 1/8" 366/Argon/ 1/8" Clear - No Muntins

Tested and Certified to AAMA/WDMA/CSA 101/I.S.2/A440-05 & A440-08 U-Value/SHGC/VT/CRF Tested to NFRC 100/200/500



800.475.5061 | gerkin.com