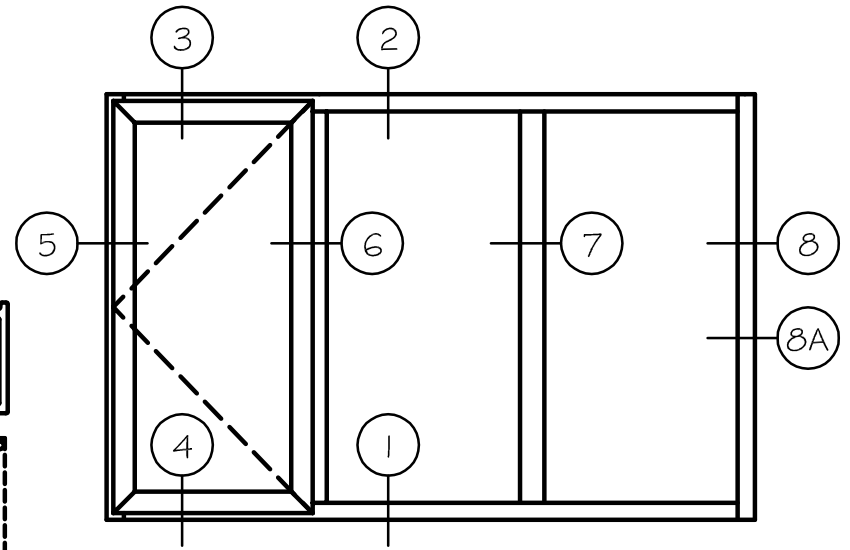
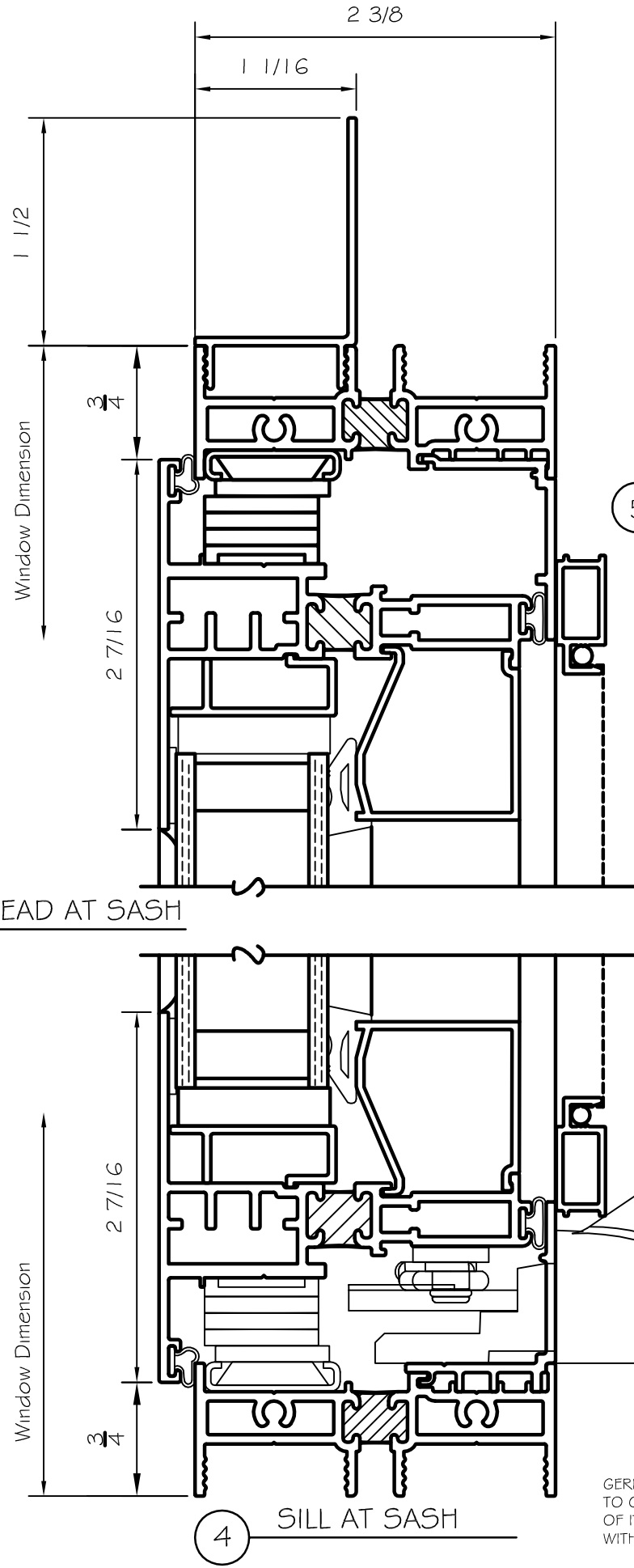


3 HEAD AT SASH



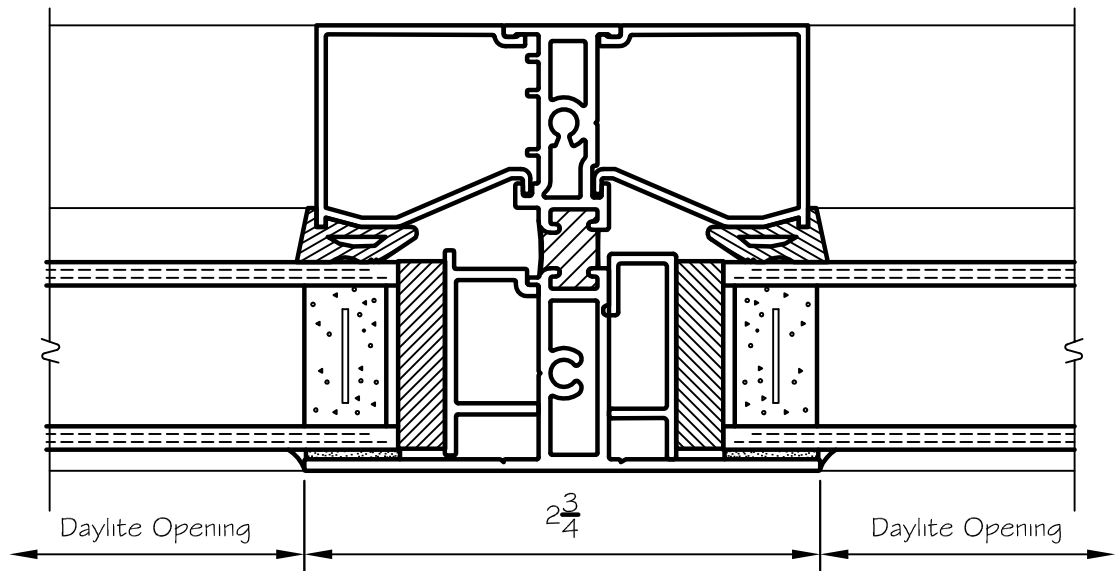
GERKIN WINDOWS & DOORS RESERVES THE RIGHT TO CHANGE OR DISCONTINUE MANUFACTURING ANY OF ITS STANDARD WINDOW SYSTEMS OR COMPONENTS WITHOUT PRIOR WRITTEN NOTICE.

GERKIN™
WINDOWS & DOORS

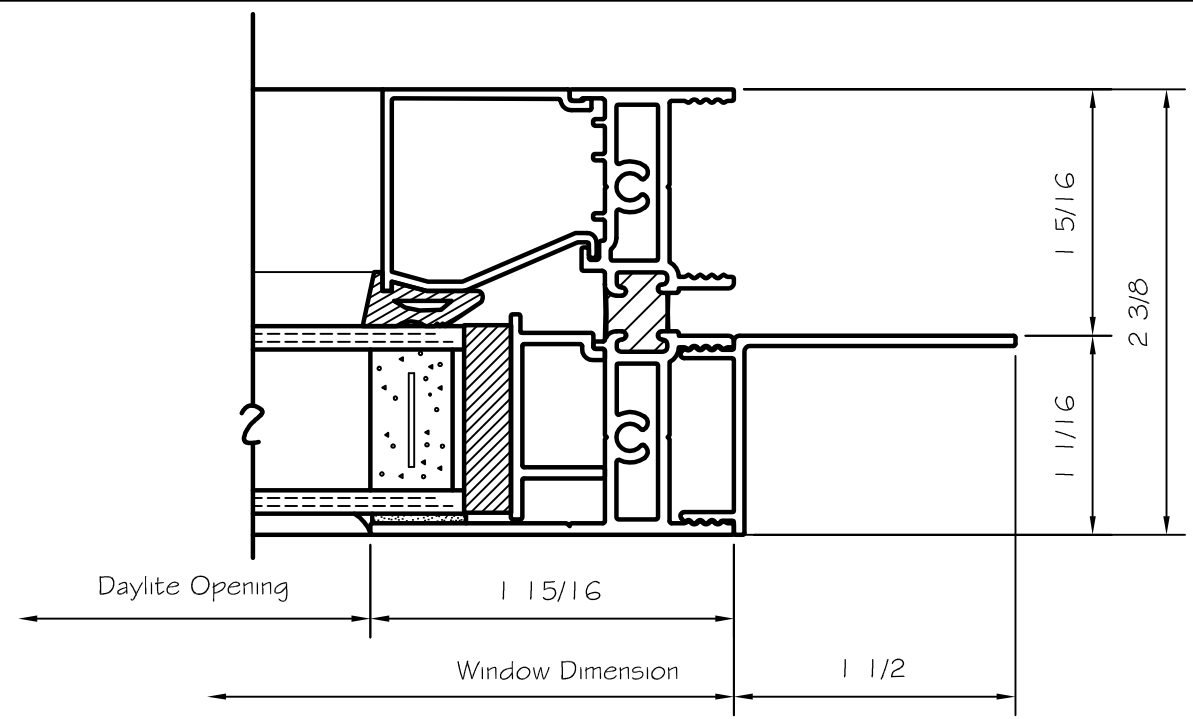
Phone: 402-494-6000 Email: gerkin@gerkin.com

SHEET NO:
2

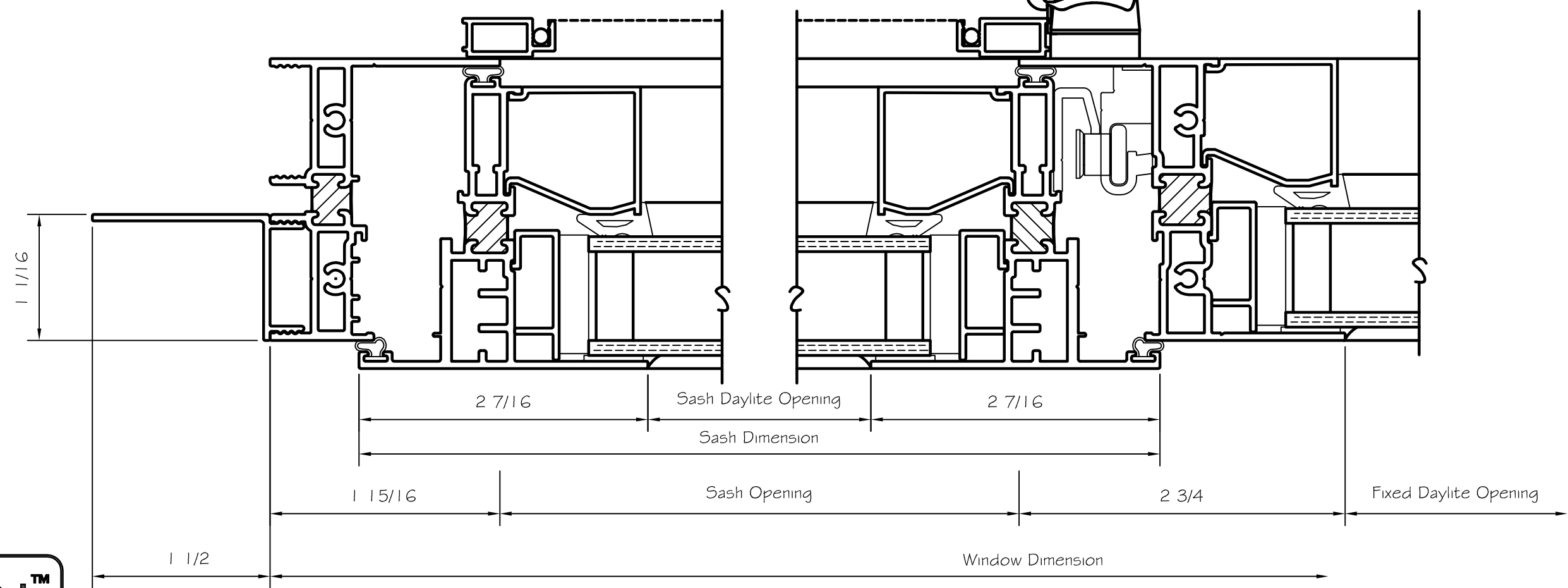
5300 SERIES PROJECT-OUT CASEMENT WINDOW



7 TRUE MUNTIN



8 JAMB @ FIXED



5 JAMB AT SASH W/
OPTIONAL NAILING FLANGE

6 MEETING RAIL



CD5500S2
GWD.LTD.2015 CDA