

Gerkin Model 58F



Why do we need an alternative?

- To provide windows with factory glazing
- To eliminate water leaks
- To eliminate the need for sill flashing w/ end dams
- To reduce workmanship liability from the glazer
- To free up glazer labor hours for more jobs
- To provide for faster installation
- To be able to offer installation in almost any weather
- To reduce costly inventory levels
- To be able to install from the interior on multi-story projects with subframe or panning

Why do we need an alternative?

- To offer installation flexibility with nail fins for wood frame construction
- To be able to offer factory installed hopper, awning or casements
- To greatly improve thermal efficiency
- To outperform storefront in air, water and thermal tests
- To be able to offer Energy Star rated fixed windows for LEED projects
- To offer longer warranties that are backed up by the manufacturer

Why does storefront leak water?

- Glass is held in by dry gaskets which leak water when rain sheets down the glass and sits on this gasket. Storefront must have a subsill flashing with end dams in order to direct water from penetrating into the wall. Many times in an effort to save money, this flashing detail is left out, thus water left unchecked is leaking into the wall.



Why does storefront leak?

- Storefront relies strictly on caulk at all joints between extrusions as well as between the extrusions and wall. All exposed caulk will fail at some point. Caulk is also only as good as the one who applies it.



Why is storefront workmanship inconsistent?

- Storefront is not a factory built product, thus the construction of storefront is done in rain, sleet, snow wind and dust. This is not an ideal way to build quality and can create workmanship issues.
- Storefront is built in stages and requires multiple trips to finish the job. The building remains open during this process.

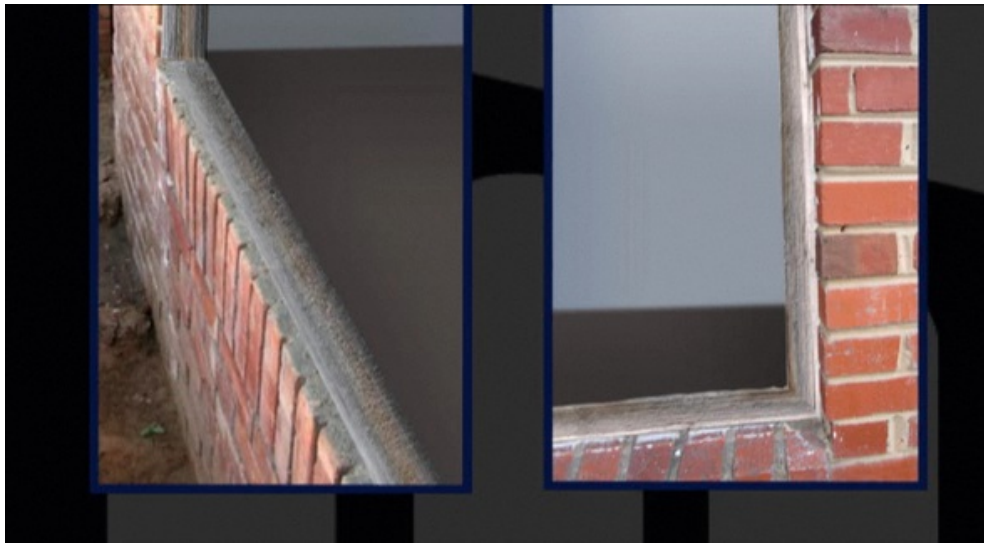
Why is energy efficiency so poor on storefront?

- Many storefront extrusions do not offer thermal breaks.
- Storefront glass spacers are made of aluminum or steel which transfer heat and cold.
- NFRC / Energy Star will not recognize any storefront systems built on site since they are not factory built. Thus, site built Energy Star rated storefront is not possible.
- LEED projects are hurt by storefront thermal values



Storefront offers limited installation accessories.

- Storefront is designed to be anchored into a condition that is not allowed to have inner story movement or thermal movement.
- Storefront is not designed for retrofit applications where coverage of existing Window frames is required.
- Storefront does not offer nailing fins for Wood frame construction.



Storefront offers limited wall conditions for installation.

- Storefront is designed to be used in flat masonry opening only.
- Storefront should never be used in wood framed structures.
- Storefront cannot be used in retrofit applications where cover up is required.



Storefront is Labor Intensive!

- Storefront requires a lot of time in the field for installation since the windows are being built while they are being installed. This time constraint limits the number of jobs that can be installed by the glazer.
- Weather is a major factor in time management with storefront installations.
- Buildings are left open due to installation delays.

Storefront offers limited operating window options.

- Storefront companies usually outsource their operating windows. When they do this they typically have the windows shipped unglazed. This means that the window manufacturer is relying on a glazer to complete the manufacturing of their window. The quality control that window companies rely on is turned over to glazers who may or may not properly assemble and seal the glass and frame of a window they do not have an expertise in.
- The glazer takes on added liability when they install an operator into storefront.
- The operators used in storefront may not be designed to fit into storefront and thus may need modification or imperfect attachments.

Gerkin Model 58F



58F Eliminates Water Leaks!

- Gerkin uses a double wall mainframe, which incorporates a built in weep system.
- Even if water gets behind the glass, our system is weeped under the glass and directed out through the front weep system.
- All extrusion connections have custom fit gaskets so that caulk is not relied on.

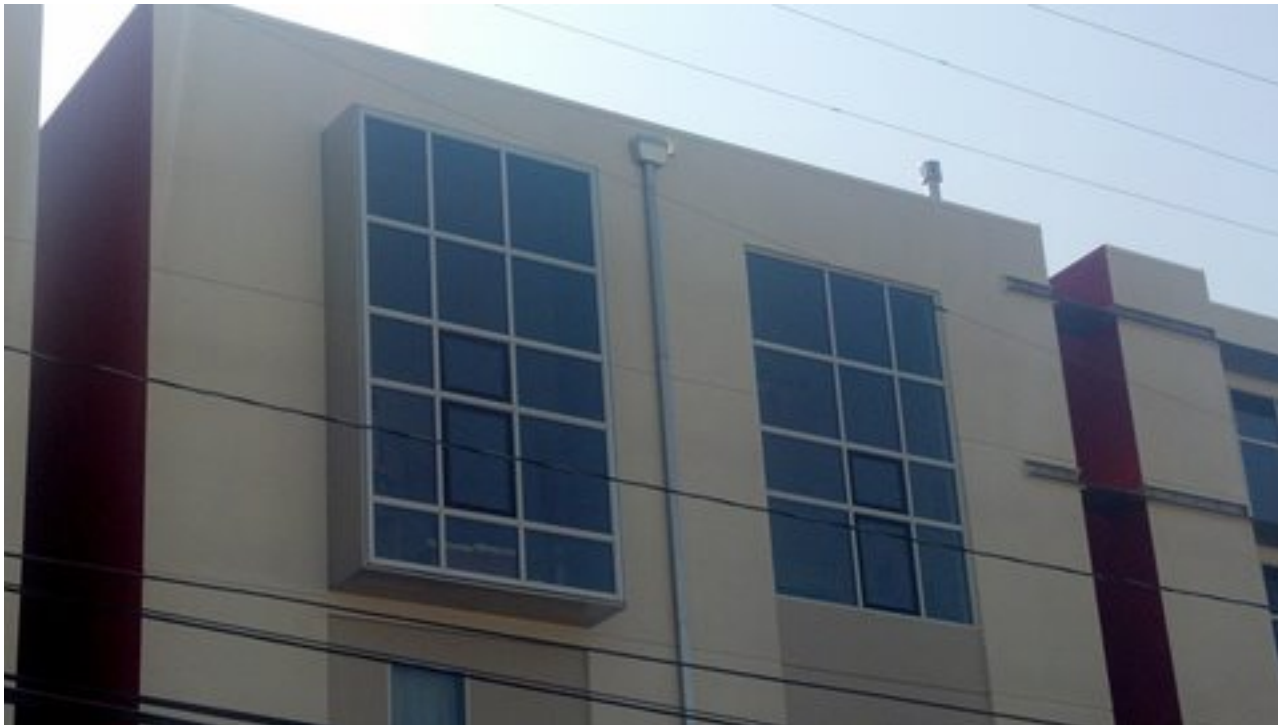




58F Offers Consistent Workmanship!

- Our window is fully built and glazed in a perfect environmentally controlled factory.
- Our production line incorporates a full line quality control system. Each person on the line has quality control authority.
- All production is done on the same line with the same people day after day. Quality control consistency is a high priority.

Gerkin Model 58F



58F Is Energy Efficient!

- All Gerkin windows have thermal breaks in the frame and sash. Our 58F offers a thermal bar thermal break, which is the best in aluminum window thermal breaks.
- We use Cardinal Low E 366 glass, which offers the best u-value off all glass options.
- We use the best glass spacer in the industry. Our Super Spacer dual seal spacer is made of structural foam, thus there is no transfer of heat or cold.
- Our dual seal offers the best insulated seal in the industry.
- The 58F is NFRC certified and can meet Energy Star requirements in all climate zones.

58F Offers A Great Selection of Installation Accessories.

- The 58F offers nail fins for wood frame construction. This helps to completely flash a window opening.
- The 58F has a subframe option which can be used for securing installation from the inside as well as allowing for thermal movement.
- We also offer a panning system which can be used to cover over an existing condition all while installing from the interior.



Nail fin



Subframe



Panning

Gerkin Model 58F



58F Can Be Used In ANY Wall Condition!

- With all off the accessories described on the previous page, this window is perfectly suited for wood frame construction as well as masonry conditions.



Gerkin Model 58F

Gerkin Provides Operable Windows and Storefront Alternatives



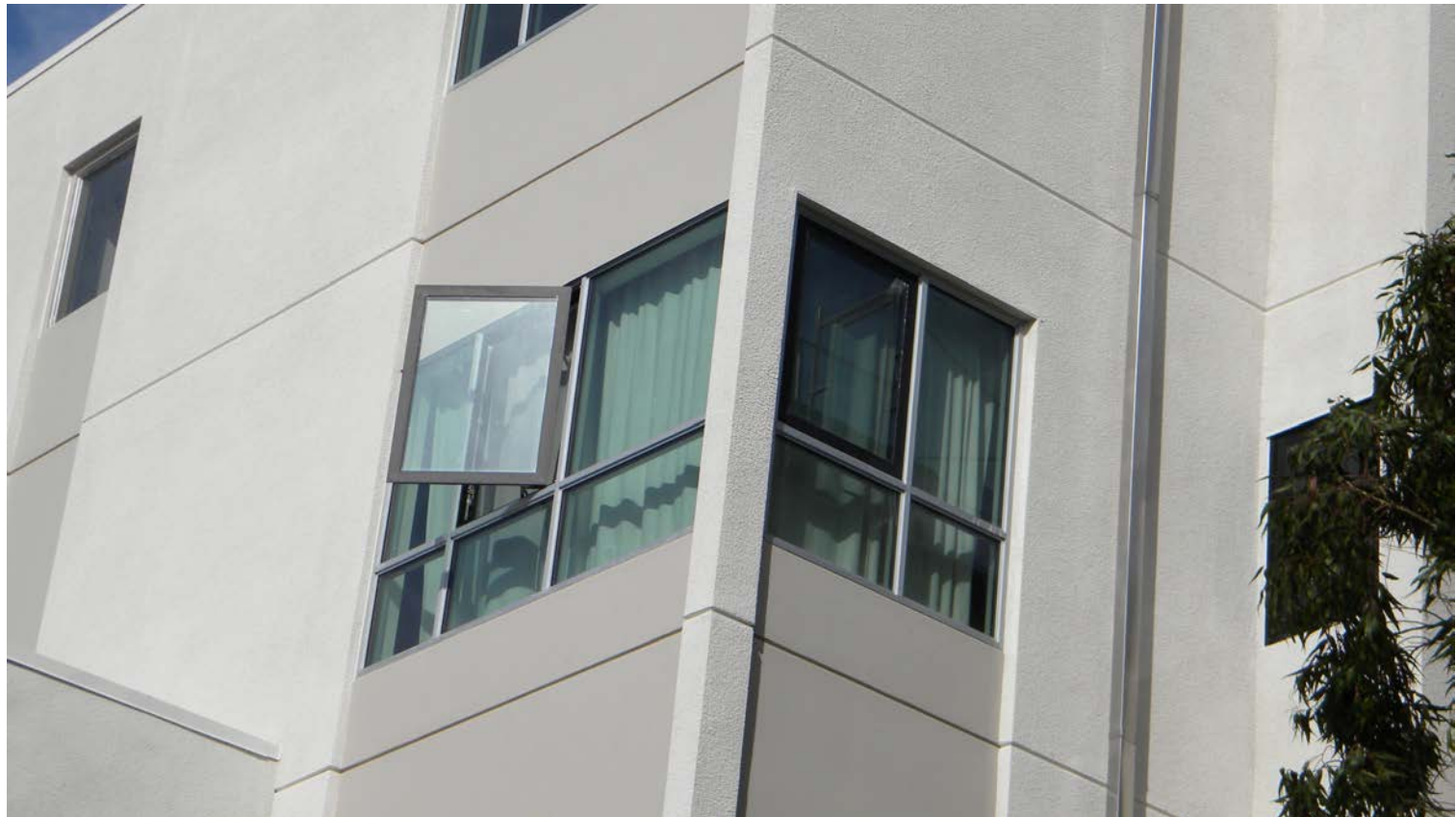


58F Can Be Easily Installed By Experienced Window Installers.

- In many cases the 58F can be used with a nail fin, which makes installing these windows similar to any residential window. Gerkin recommends the use of the nail fin whenever possible in order to properly flash the window and secure it from water coming in around the window.
- Window installers can install the 58F with nail fins in traditional storefront locations. This will help close up the building in a timely manner with less installation costs.
- For masonry openings, the 58F can be ordered with predrilled anchor holes and snap in anchor cover plates.

Gerkin Model 58F

Factory Installed Casement in 58F



58F Can Be Manufactured With Operating Windows!

- We can factory install Gerkin brand hoppers, awnings and casements in the 58F frame.
- Our double hung can be matched in with our 58F frame.
- Gerkin now offers a sliding patio door which will match with our 58F window.



58F Specifications

- AAMA Rating up to CW45/LC50, 12 lb. water, .01 air at 50 mph (180 x 99 3-lite)
- AAMA Rating up to CW35/LC50, 12 lb. water, .01 air at 50 mph (96 x 120 2-lite)
- NFRC Rating with 1" insulated glass with .75" glazing and Low E 366 with argon has the following ratings: U-Value - .33, SHGC - .24, VT - .56, CR - 59
- 4 5/16 frame depth – Allows us to build single lite windows up to 60 x 99 or 48 x 120. It also offers a deep enough frame depth to cover over wide air gaps between brick and block. (Test size – 178" x 99" 3-lite fixed all in one frame 95 x 120)

- Here are some of the size guidelines:
- Horizontal Ribbons of 60 x 99
- Horizontal Ribbons of 48 x 120
- Horizontal Ribbons of 99 x 60
- Horizontal Ribbons of 72 x 72
- Vertical Ribbon 72 x 180 (Max. lite is 72 x 60)
- Minimum size is 18" x 18"

58F With Equal Sightlines



58F – The Perfect Storefront Alternative

